

WI-FI PRINTING (WINDOWS)

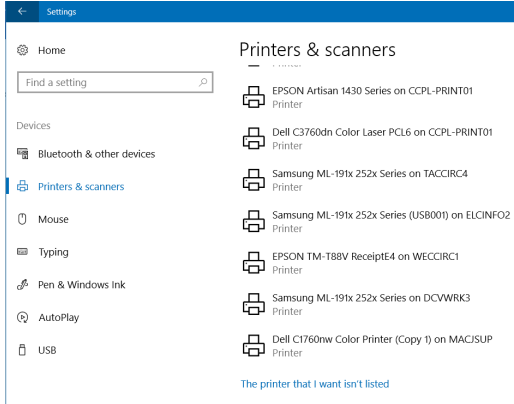
Login to SPOT.

Download the available Windows printer driver. This is not an installer, it will extract the driver files to the computer in a folder named **HP_Color_Laserjet_Enterprise_M553** on the C drive.

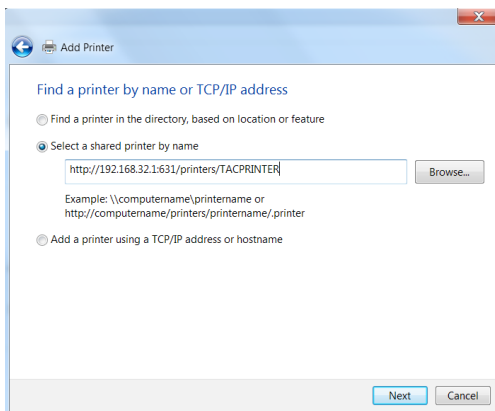
Add the printer manually. (Windows 10)

Settings -> Devices -> Printers & scanners -> Click Add printer or scanner

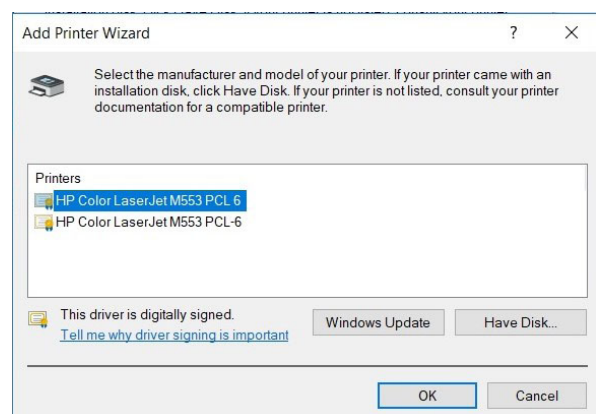
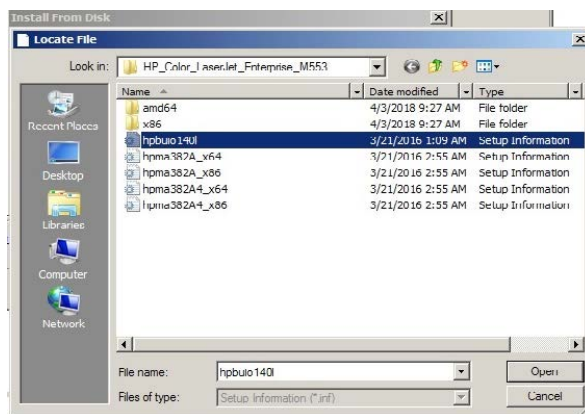
After a short search, click on **The printer that I want isn't listed.**



In the box that appears choose **Select a shared printer by name** and fill in the box with the URL: **http://192.168.32.1:631/printers/TACPRINTER** (this URL can be found and copied from the SPOT page).



After clicking Next and Windows finds the printer, click on **Have Disk**. Browse to the folder **c:\HP_Color_Laserjet_Enterprise_M553** and click **OK**. Select the first file and click **Open**.



Select the printer **HP LaserJet 500 color M553 PCL6** and click **Ok** or **Next**. The printer will install.

Note: *Wi-Fi printing requires cash only. Library card balances cannot be used towards Wi-Fi printing. Exact change is recommended, as change cannot be given once your session ends.*

